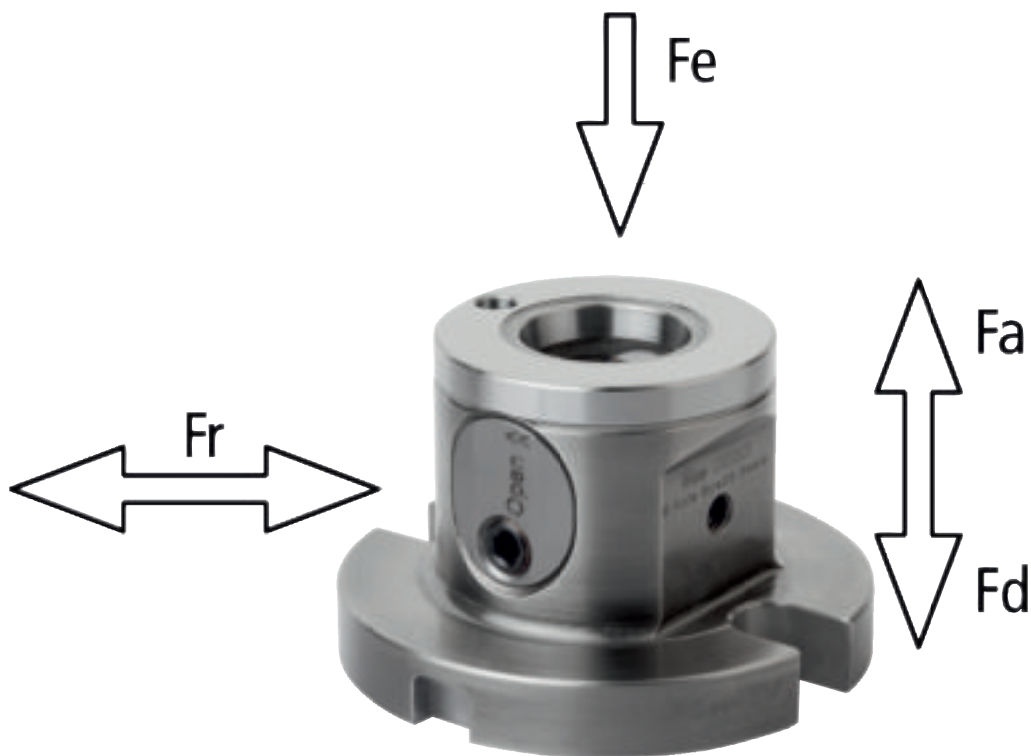


5-axis module clamping system 50



Forces

System size 50 mm



Fr Permissible transverse force

Fa Permissible clamping force

Fd Permissible contact force

Fe Clamping bolt pull-in force

Permissible load with full contact:

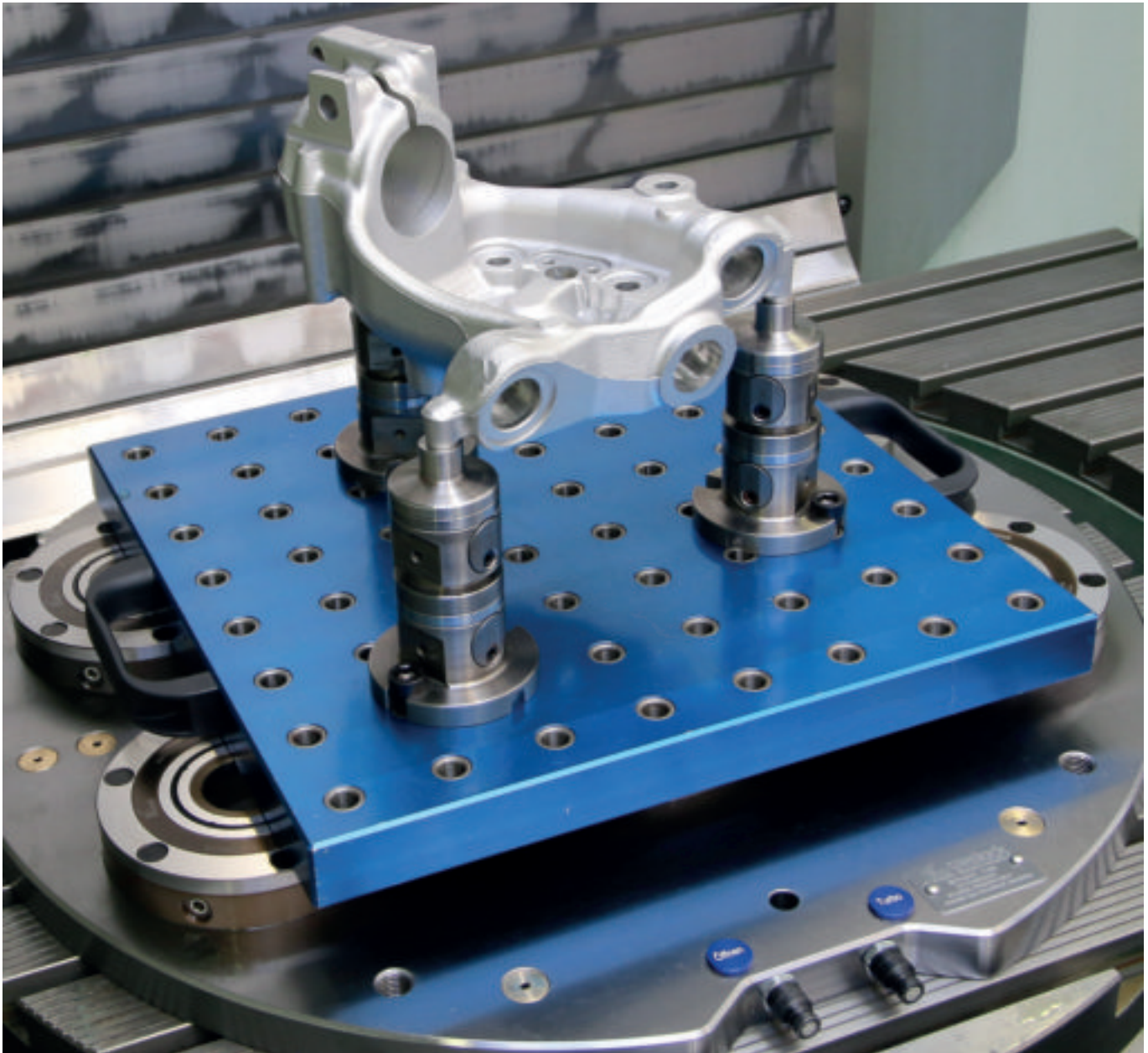
		Fr	Fa	Fd	Fe
Clamping pin screw M6	kN	15	20	25	8
Clamping pin screw M8	kN	15	25	25	10
Clamping pin screw M10	kN	15	30	25	12

Note: Forces apply at a max. tightening torque of 10 Nm.

Function



The UNI lock clamping system 50 mm has been developed specifically for 5-side machining of small workpieces.



Advantages:

- 5-side machining with no protruding edges
- Modular construction guarantees maximum flexibility
- Can be combined with the UNI lock modular system 80 mm
- Small gauges for modules from 40 mm possible
- Small clamping pin, D 25 mm, for workpieces with smaller dimensions
- Variable workpiece fastening
- The workpiece is simply positioned and clamped with screws or seatings
- High module clamping force
- Very high repeat accuracy



UNI lock 5-axis basic module

system size 50 mm



Material:

Steel.

Version:

Main body oxidised.

Contact faces case-hardened and ground.

Sample order:

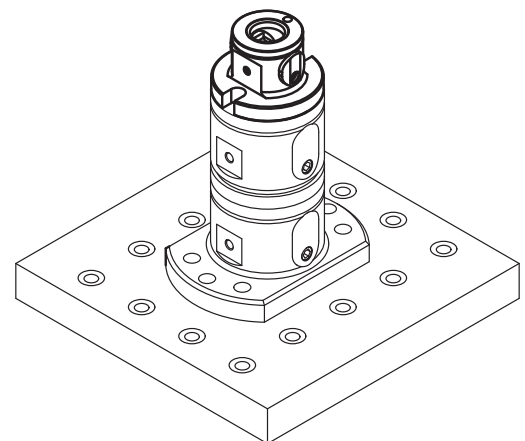
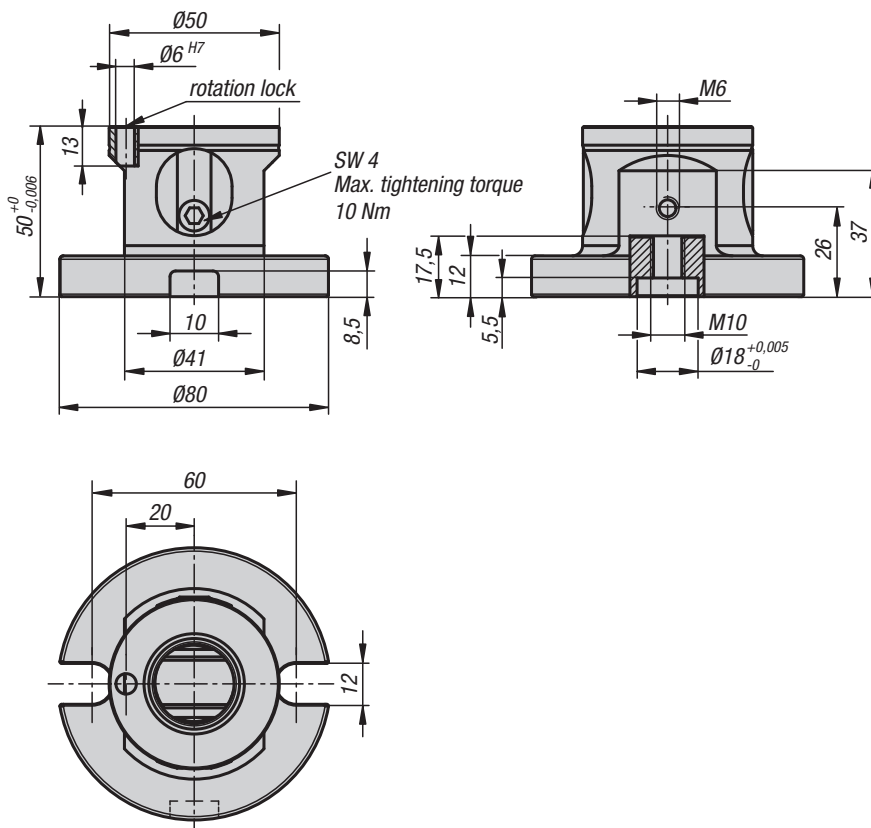
K1117.12050601

Note:

The UNI lock 5-axis basic module, system size 50 can be adapted to mount on machine tables with grid holes or T-slots, or on grid hole subplates. The system size 50 basic module can also be combined with the system size 80 modules, allowing smaller workpieces to be easily clamped with the module clamping system.

Matches UNI lock zero point clamping system with UNI lock D=18 mm clamping bolts.

Can also be mounted directly onto commonly available zero point clamping systems using suitable clamping bolts.



KIPP UNI lock 5-axis basic module, system size 50 mm

Order No.

Version

K1117.12050601

rotation lock

UNI lock 5-axis basic module adjustable

system size 50 mm



Material:

Steel.

Version:

Main body oxidised.

Contact faces case-hardened and ground.

Sample order:

K1117.12072600

Note:

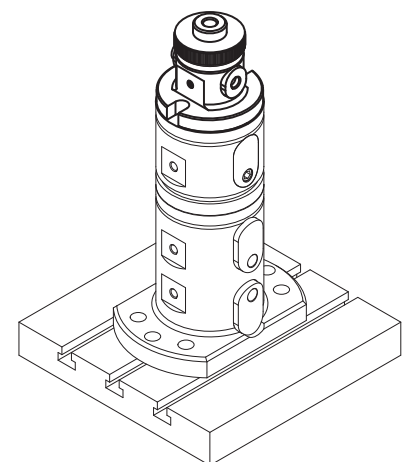
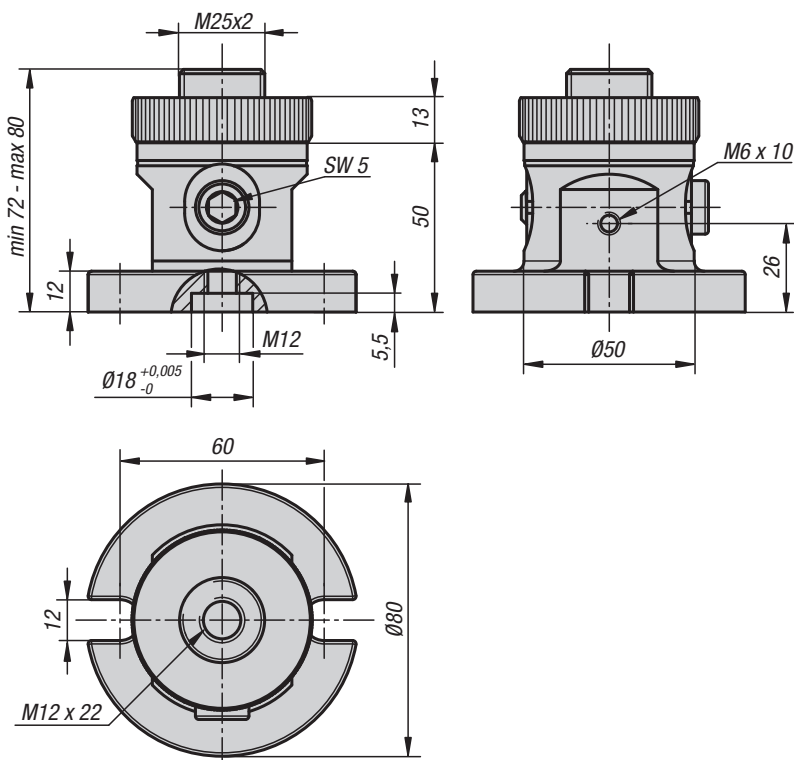
The UNI lock 5-axis basic module, system size 50 can be adapted to mount on machine tables with grid holes or T-slots, or on grid hole subplates.

The system size 50 basic module can also be combined with the system size 80 modules, allowing smaller workpieces to be easily clamped with the module clamping system.

Matches UNI lock zero point clamping system with UNI lock D=18 mm clamping pins.

Can also be mounted directly onto commonly available zero point clamping systems if a suitable clamping pin is used..

Height adjustment with brass ring. Locking with a lateral lock screw. Workpieces with varying support face heights can be optimally supported and clamped.



KIPP UNI lock 5-axis basic module adjustable, system size 50 mm

Order No.

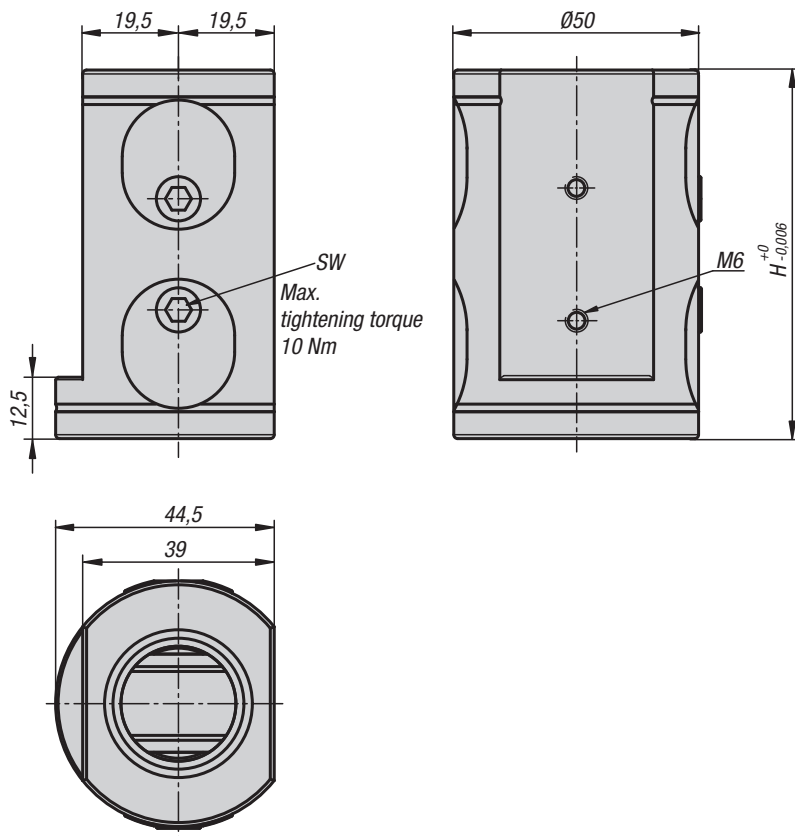
Version

K1117.12072600

adjustable

UNI lock 5-axis basic module double clamp

system size 50 mm



Material:

Steel.

Version:

Main body oxidised.

Contact faces case-hardened and ground.

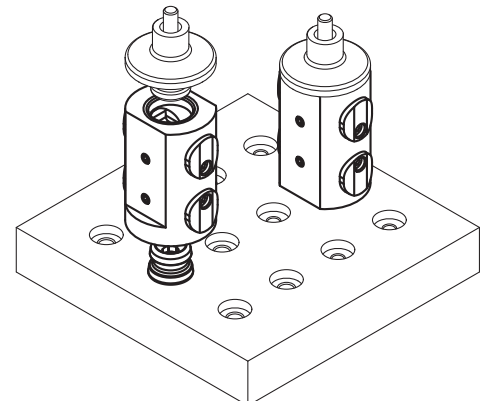
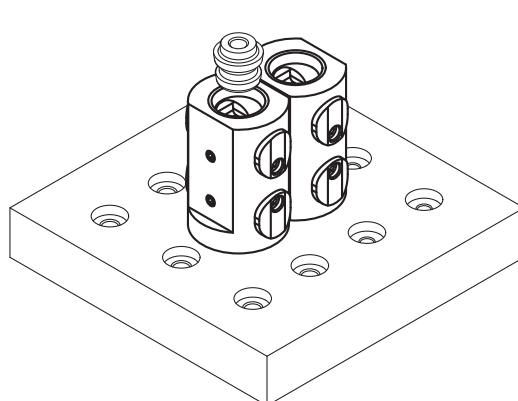
Sample order:

K1118.000750

Note:

The UNI lock 5-axis double clamp basic modules can be adapted directly to machine tables with grid holes or T-slots, as well as grid hole subplates.

The narrow design of the basic module enables it to be used on grid spacings from 20 mm.

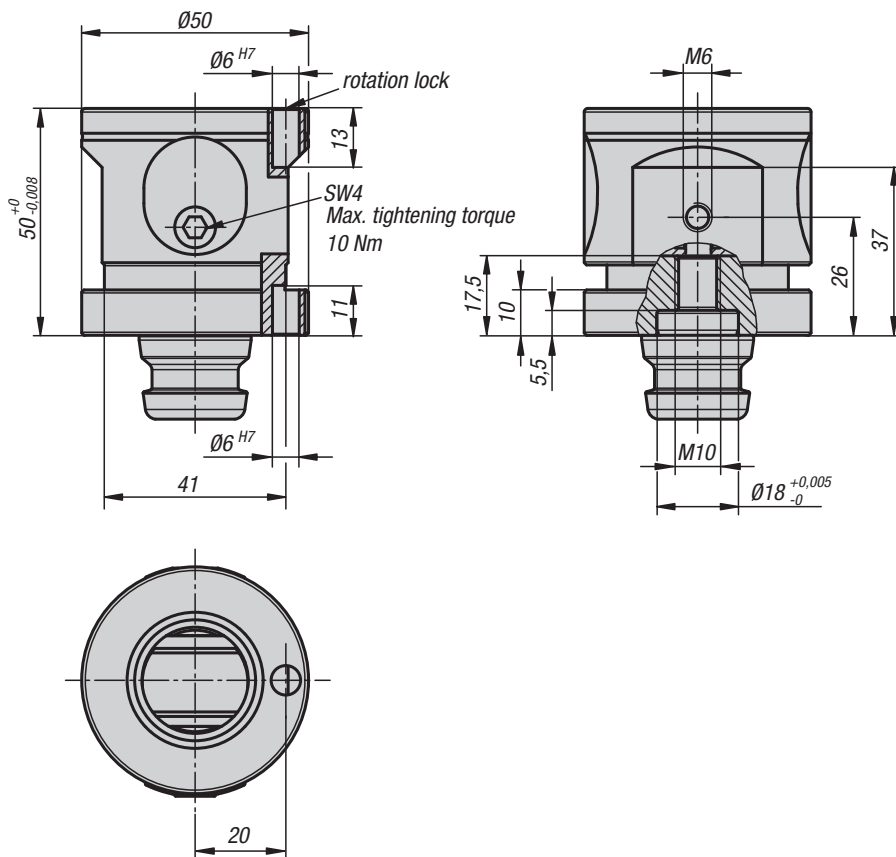


KIPP UNI lock 5-axis basic module, double clamp, system size 50 mm

Order No.	H	SW
K1118.000750	75	4

UNI lock 5-axis add-on module

system size 50 mm



Material:

Steel.

Version:

Main body oxidised.

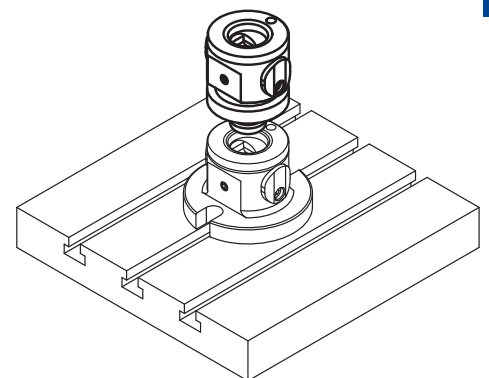
Contact faces case-hardened and ground.

Sample order:

K1119.0501

Note:

The UNI lock 5-axis add-on modules serve to raise the height of the basic modules and other add-on modules. Depending on the clamping situation, a combination of the basic modules and the add-on modules can be used to achieve the optimum clamping height. The system size 50 add-on module can also be combined with the system size 80.



KIPP UNI lock 5-axis add-on module, system size 50 mm

Order No.

Version

K1119.0501

rotation lock

UNI lock 5-axis add-on module adjustable

system size 50 mm



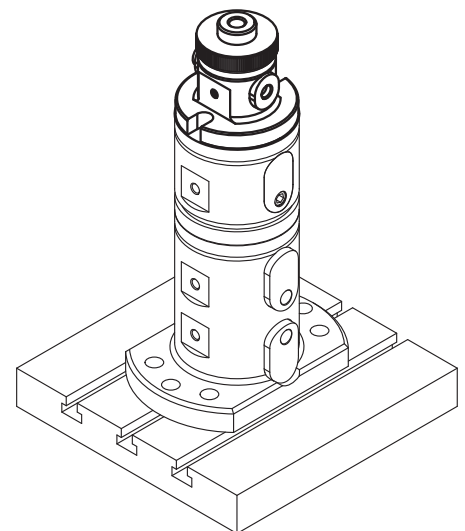
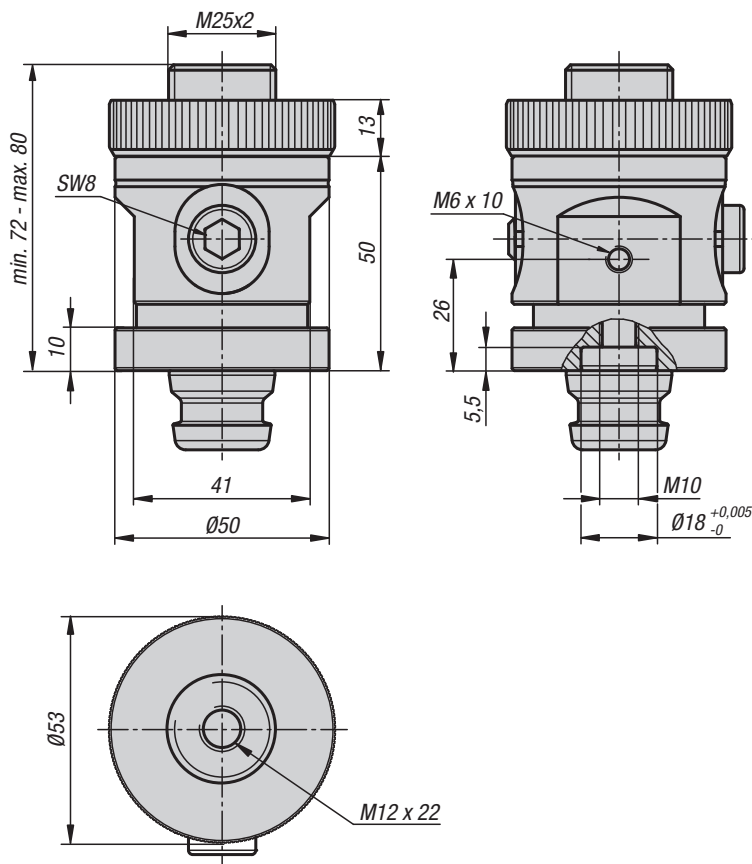
Material:
Steel.

Version:
Main body oxidised.
Contact faces case-hardened and ground.

Sample order:
K1119.0720

Note:
UNI lock 5-axis add-on clamp modules are used for raising basic modules and mounting bases. Depending on the clamping situation, optimum assembly height can be achieved using a combination of basic module and add-on module. The system size 50 add-on module can also be combined with the system size 80.

Height adjustment with brass ring. Locking with a lateral lock screw. Workpieces with varying support face heights can be optimally supported and clamped.

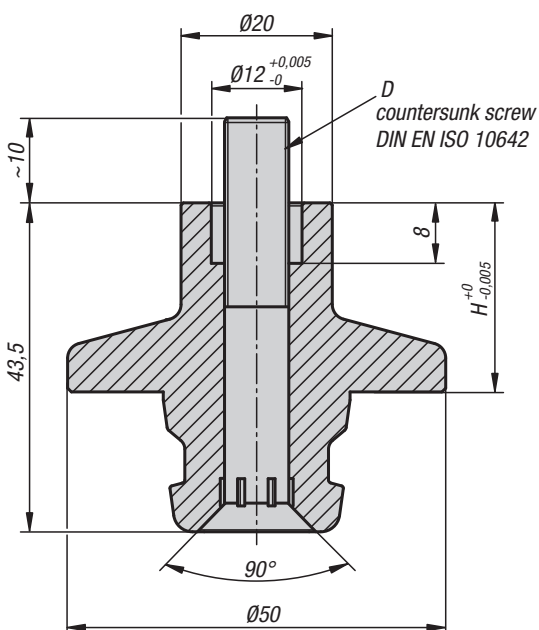


KIPP UNI lock 5-axis add-on module adjustable, system size 50 mm

Order No.	Version
K1119.0720	adjustable

UNI lock 5-axis reducer adapter

system size 50 mm

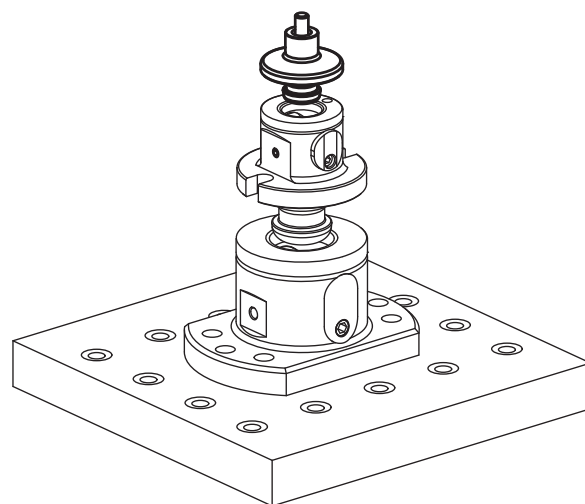


Material:
Steel.

Version:
Body oxidised.
Contact surfaces case-hardened and ground.

Sample order:
K1120.251081

Note:
The UNI lock 5-axis reducer adapter is suitable for clamping and positioning workpieces.
Reducer adapters can be screwed onto the workpiece and mounted on the basic module or add-on clamp module.
The system size 50 add-on module can also be combined with the system size 80.



KIPP UNI lock 5-axis reducer adapter, system size 50 mm

Order No.	Form	D	H
K1120.251081	A	M8	25

UNI lock clamping pin

system size 50 mm



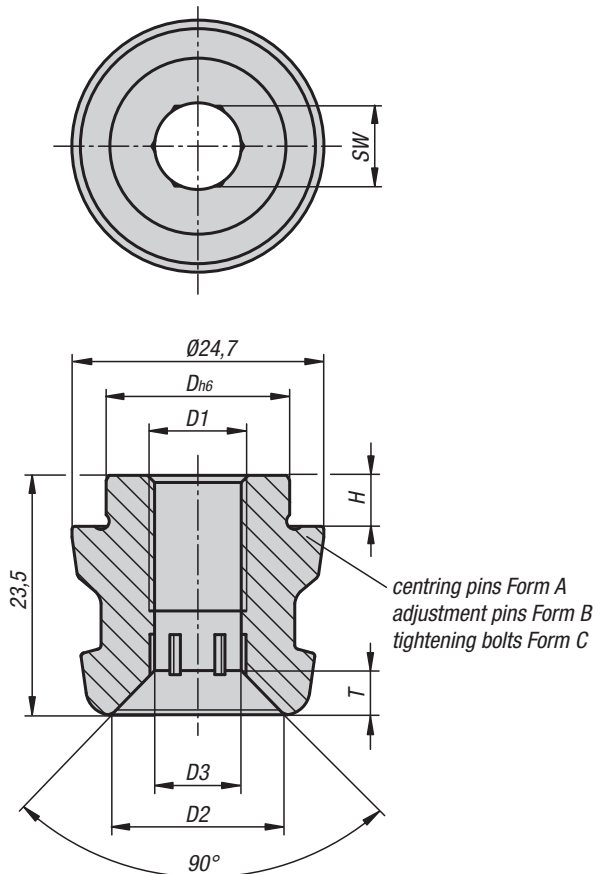
Material:
Steel.

Version:

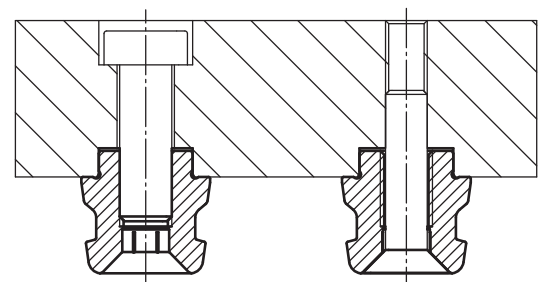
Sample order:
K1121.125180510

Note:

The UNI lock clamping bolt is suitable for clamping and positioning workpieces and fixtures. Clamping bolts are screwed onto the exchange element and adapted to the various basic modules.



- Centring pins = Form A fixes in x and y axis (reference point)
- ⊕ Adjustment pins = Form B fixes the free axis (bayonet pin)
- ⊕ Tightening bolts = Form C Pins with undersize (no centring function, clamping only)



KIPP UNI lock clamping pin, system size 50 mm

Order No.	Form	D1	D	D2	D3	H	T	SW
K1121.125180510	A	M10	18	16,5	9	5	5	8
K1121.225180510	B	M10	18	16,5	9	5	5	8
K1121.325180510	C	M10	18	16,5	9	5	5	8



Notes

