

Dino-Lite universal

More information on www.dino-lite.eu/universal



Dino-Lite universal

The Dino-Lite universal series provides a broad range of products with the highest image quality, as well as very user-friendly software with comprehensive measurement functions, and several unique hard and software features to satisfy the most demanding user. This range consists of Dino-Lite models with a USB connection with a magnification of up to 220 times and an image resolution of 1.3 megapixel or 5 megapixels.

For working with reflective objects, you can choose the models with the built-in polarization filter with adjustable polarization. For the best look and feel and enhanced durability, we offer models of robust metal housing. The Dino-Lite Edge series is a special category within the universal range; the Edge series provide even better image quality and greater flexibility. The high-quality optics provide a very sharp, bright and natural color image with very low aberration and vignetting. The exchangeable caps provide for even more flexibility for use in all kinds of professional applications.

key features

- ▶ magnification of up to 220x
- ▶ 1.3 megapixel or 5 megapixel
- ▶ with or without polarization filter
- ▶ metal housing or composite housing
- ▶ edge series with Extended Depth of Field (EDOF), Extended Dynamic Range (EDR), Flexible LED Control (FLC) and Automatic Magnification Reading (AMR)
- ▶ includes the advanced DinoCapture software for Windows and DinoXcope for MacOS



AM4113xx series



AM41xx/45xx/48xx series

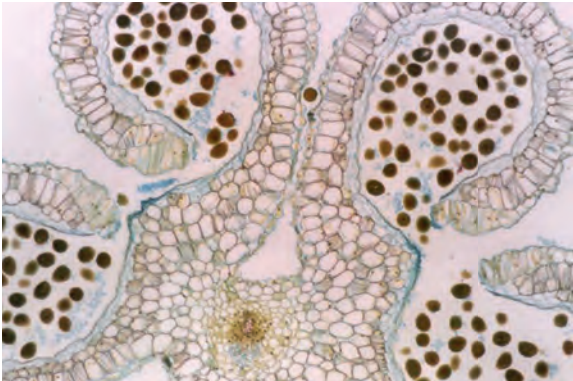


AM4013xx/AM7013xx series



AM7115xx/AM7515xx/AM7915xx series

Dino-Lite universal



- 2** 2-year European warranty
- SDK** Free SDK available for integration projects
- Wireless streaming in combination with WF-10 unit
- Regulatory approval: CE, FCC, ROHS
- Included software: DinoCapture 2.0 (Windows), DinoXcope (Mac OS)

| MODEL | RESOLUTION | MAGNIFICATION | CONNECTIVITY | LONG WORKING DISTANCE | MEASUREMENT & CALIBRATION | NUMBER OF LEDS | EXCHANGABLE CAPS | POLARIZER | METAL HOUSING | ESD-SAFE | GENERATION | ADDITIONAL FEATURES | PRICE RANGE |
|------------|---------------|----------------|--------------|-----------------------|---------------------------|----------------|------------------|-----------|---------------|----------|------------|---------------------|--------------|
| UNIVERSAL | | | | | | | | | | | | | |
| AM4113T | 1,3 Megapixel | 10 - 70x, 200x | USB 2.0 | - | ✓ | 8 | - | - | - | - | - | - | € 200 - 300 |
| AM4013MT | 1,3 Megapixel | 10 - 70x, 200x | USB 2.0 | - | ✓ | 8 | - | - | ✓ | ✓ | - | - | € 400 - 500 |
| AM4113ZT | 1,3 Megapixel | 10 - 70x, 200x | USB 2.0 | - | ✓ | 8 | - | ✓ | - | - | - | - | € 300 - 400 |
| AM4013MZT | 1,3 Megapixel | 10 - 70x, 200x | USB 2.0 | - | ✓ | 8 | - | ✓ | ✓ | ✓ | - | - | € 400 - 500 |
| AM4115T | 1,3 Megapixel | 20 - 220x | USB 2.0 | - | ✓ | 8 | ✓ | - | - | - | Edge | - | € 400 - 500 |
| AM4115ZT | 1,3 Megapixel | 20 - 220x | USB 2.0 | - | ✓ | 8 | ✓ | ✓ | - | - | Edge | - | € 500 - 600 |
| AM4115TW | 1,3 Megapixel | 10 - 50x | USB 2.0 | - | ✓ | 8 | ✓ | - | - | - | Edge | MACRO ZOOM | € 400 - 500 |
| AM4115ZTW | 1,3 Megapixel | 10 - 50x | USB 2.0 | - | ✓ | 8 | ✓ | ✓ | - | - | Edge | MACRO ZOOM | € 500 - 600 |
| AM4515T | 1,3 Megapixel | 20 - 220x | USB 2.0 | - | ✓ | 8 | ✓ | - | - | - | Edge | AMR | € 400 - 500 |
| AM4515ZT | 1,3 Megapixel | 20 - 220x | USB 2.0 | - | ✓ | 8 | ✓ | ✓ | - | - | Edge | AMR | € 500 - 600 |
| AM4815T | 1,3 Megapixel | 20 - 220x | USB 2.0 | - | ✓ | 8 | ✓ | - | - | - | Edge | EDOF/EDR | € 600 - 700 |
| AM4815ZT | 1,3 Megapixel | 20 - 220x | USB 2.0 | - | ✓ | 8 | ✓ | ✓ | - | - | Edge | EDOF/EDR | € 700 - 800 |
| AM7013MT | 5 Megapixel | 10 - 70x, 200x | USB 2.0 | - | ✓ | 8 | - | - | ✓ | ✓ | - | - | € 500 - 600 |
| AM7013MZT | 5 Megapixel | 10 - 70x, 200x | USB 2.0 | - | ✓ | 8 | - | ✓ | ✓ | ✓ | - | - | € 600 - 700 |
| AM7115MZT | 5 Megapixel | 20 - 220x | USB 2.0 | - | ✓ | 8 | ✓ | ✓ | ✓ | ✓ | Edge | FLC | € 700 - 800 |
| AM7115MZTW | 5 Megapixel | 10 - 50x | USB 2.0 | - | ✓ | 8 | ✓ | ✓ | ✓ | ✓ | Edge | MACRO ZOOM /FLC | € 800 - 900 |
| AM7515MZT | 5 Megapixel | 20 - 220x | USB 2.0 | - | ✓ | 8 | ✓ | ✓ | ✓ | ✓ | Edge | AMR/FLC | € 800 - 900 |
| AM7915MZT | 5 Megapixel | 10 - 220x | USB 2.0 | - | ✓ | 8 | ✓ | ✓ | ✓ | ✓ | Edge | AMR/EDOF/EDR/FLC | € 900 - 1000 |
| AM7515MT2A | 5 Megapixel | 130 - 220x | USB 2.0 | - | ✓ | 9 | ✓ | - | ✓ | ✓ | Edge | AMR/FLC/Coaxial | € 900 - 1000 |

recommended product

More information on www.dino-lite.eu/am7915mzt

AM7915MZT

Edge Sensor - Polarizer - EDOF - EDR - AMR

With the use of the latest, cutting-edge optics, a brand new 5 megapixel sensor and several special features, the Dino-Lite AM7915MZT is a marvel of technology and the best choice for the high-demanding professional. The Dino-Lite AM7915MZT offers superb image quality and color reproduction in a robust, compact and appealing housing.

With the Extended Dynamic Range (EDR) feature, the details of darker or brighter areas within the object can be revealed by stacking images at different exposure levels. The Extended Depth of Field (EDOF) feature automatically stacks images at different focus level to improve the depth of field on rough or uneven surfaces. With the built-in automatic magnification reading (AMR), measurements can be performed easily and quickly. Because of the built-in polarization filter this model is ideal when working with shiny or reflective objects such as metal, plastic, glass, jewelry, electronics, etc.



5 megapixels
2592 x 1934



usb 2.0



adjustable
~10x - 220x



extended
depth of field
EDOF



extended
dynamic range
EDR



automatic
magnification
reading AMR



flexible LED
control FLC



exchangeable
caps



polarizer
anti-reflection

