

Dino-Lite high magnification

More information on www.dino-lite.eu/highmagnification



Dino-Lite high magnification

Dino-Lite models within the high magnification series exceed a magnification of 200 times and offer magnifications of 400x, 500x or even a dazzling 900 times. Microscopes in this range offer an image resolution of 1.3 megapixel or 5 megapixel, a USB connection and include the user-friendly DinoCapture software. Models with a built-in polarizer to reduce reflection or models with an extra robust metal housing are also available.

These unique features make the Dino-Lite high magnification models great inspection tools for biomedical and scientific research, material analysis, electronics inspection, or any similar application that requires high magnification, versatility, and mobility.

key features

- ▶ magnification of up to 900x
- ▶ 1.3 megapixel or 5 megapixel
- ▶ with or without a polarization filter
- ▶ metal housing or composite housing
- ▶ Edge series with Flexible LED Control (FLC) and Automatic Magnification Reading (AMR)
- ▶ includes the advanced DinoCapture software for Windows and DinoXcope for MacOS



AM4113T5 series



AM4113ZT4 series



AM4515T5 and T8 series

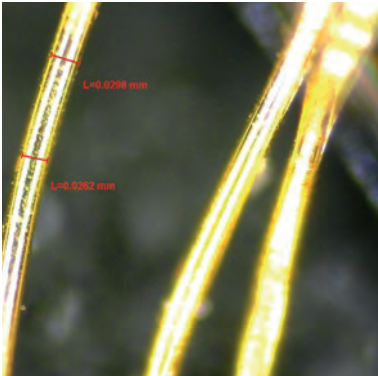
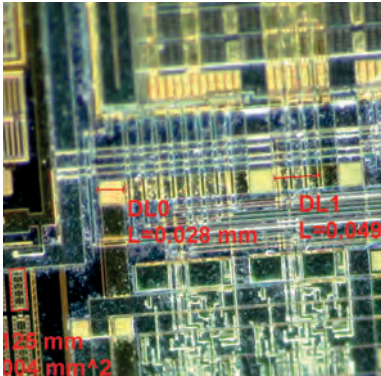
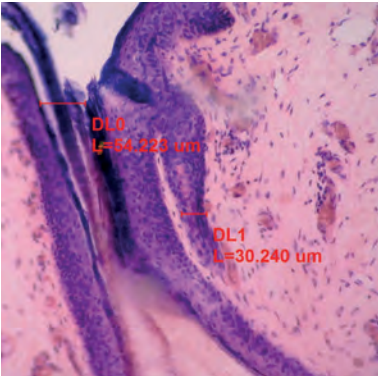


AM4013ZT4/AM7013ZT4 series



AM7515MTx series

Dino-Lite high magnification



- 2-year European warranty
- Free SDK available for integration projects
- Wireless streaming in combination with WF-10 unit

- Regulatory approval: CE, FCC, ROHS
- Included software: DinoCapture 2.0 (Windows), DinoXcope (Mac OS)

| MODEL | RESOLUTION | MAGNIFICATION | CONNECTIVITY | LONG WORKING DISTANCE | MEASUREMENT & CALIBRATION | NUMBER OF LEDS | EXCHANGABLE CAPS | POLARIZER | METAL HOUSING | ESD-SAFE | GENERATION | ADDITIONAL FEATURES | PRICE RANGE |
|--------------------|---------------|---------------|--------------|-----------------------|---------------------------|----------------|------------------|-----------|---------------|----------|------------|---------------------|--------------|
| HIGH MAGNIFICATION | | | | | | | | | | | | | |
| AM4113ZT4 | 1,3 Megapixel | 400 - 470x | USB 2.0 | - | ✓ | 8 | - | ✓ | - | - | - | - | € 300 - 400 |
| AM4013MZT4 | 1,3 Megapixel | 400 - 470x | USB 2.0 | - | ✓ | 8 | - | ✓ | ✓ | ✓ | - | - | € 500 - 600 |
| AM7013MZT4 | 5 Megapixel | 400 - 470x | USB 2.0 | - | ✓ | 8 | - | ✓ | ✓ | ✓ | - | - | € 600 - 700 |
| AM4113T5 | 1,3 Megapixel | 500x | USB 2.0 | - | ✓ | 8 | - | - | - | - | - | - | € 300 - 400 |
| AM4013MT5 | 1,3 Megapixel | 500x | USB 2.0 | - | ✓ | 8 | - | - | ✓ | ✓ | - | - | € 400 - 500 |
| AM4515ZT4 | 1,3 Megapixel | 400 - 470x | USB 2.0 | - | ✓ | 8 | ✓ | ✓ | - | - | Edge | AMR | € 500 - 600 |
| AM4515T5 | 1,3 Megapixel | 500 - 550x | USB 2.0 | - | ✓ | 8 | ✓ | - | - | - | Edge | AMR | € 500 - 600 |
| AM4515T8 | 1,3 Megapixel | 700 - 900x | USB 2.0 | - | ✓ | 8 | ✓ | - | - | - | Edge | AMR | € 600 - 700 |
| AM7515MT4A | 5 Megapixel | 415 - 470x | USB 2.0 | - | ✓ | 9 | ✓ | - | ✓ | ✓ | Edge | AMR/FLC/Coaxial | € 900 - 1000 |
| AM7515MT8A | 5 Megapixel | 700 - 900x | USB 2.0 | - | ✓ | 9 | ✓ | - | ✓ | ✓ | Edge | AMR/FLC/Coaxial | € 900 - 1000 |

recommended product

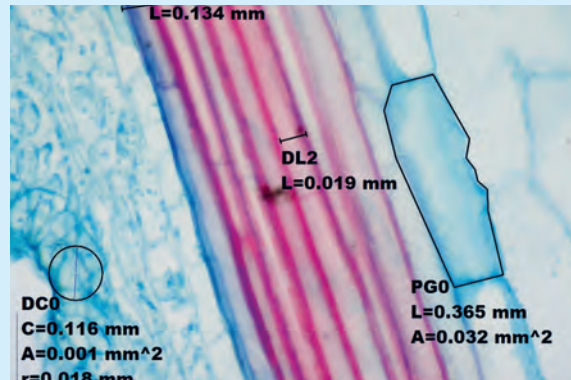
More information on www.dino-lite.eu/am4515t8

AM4515T8 – edge

Edge Sensor - AMR - up to 900x magnification

With up to 900x magnification and high-resolution optics, this high magnification Dino-Lite model reveals details as small as 1.5 micrometers (μm). It also features a greater working distance at high magnification making it easier to watch and move very small objects under the microscope. These unique features make the Dino-Lite AM4515T8 a great inspection tool for biomedical and scientific research, material analysis, electronics inspection, or any similar application that require high magnification, versatility, and mobility.

The Dino-Lite AM4515T8 is bundled with the user-friendly DinoCapture 2.0 software. For this model, it includes functions such as automatic magnification reading (AMR), calibration, measurement, capturing & annotating images, and recording video. Although the AM4515T8 model can be operated handheld, a high-precision stand is recommended. The Dino-Lite RK-10A, for example, is a great add-on, it is a sturdy and stable high-end stand solution constructed of resilient stainless steel and lightweight aluminum and offers a very precise fine-focus adjustment.



usb 2.0



measurement
functionality



adjustable
~700-900x



automatic
magnification
reading AMR



magnification
lock



1,3 megapixels
1280 x 1024



8 white leds
switchable



exchangeable
caps