

Dino-Lite long working distance

More information on www.dino-lite.eu/longworkingdistance



Dino-Lite long working distance (LWD)

For tasks where extra distance to the object and a larger field of view is required Dino-Lite offers a series of long working distance microscopes. The extra working distance and larger field of view make this series an ideal solution for tasks such as repair, rework or assembly or for working with bulky objects or fragile objects that cannot be touched.

Microscopes in this range offer an image resolution of 1.3 megapixel or 5 megapixel, a USB connection and include the user-friendly DinoCapture software for Windows or MacOS. Models with a built-in polarizer to reduce reflections or models with an extra robust metal housing are also available. The maximum magnification reaches 140 times which is usually more than enough for this kind of applications.

Specifically designed with the needs of the electronics industry in mind Dino-Lite even offers several ESD safe models with long working distance and a larger field of view.



AM4113xx series



AM41xx/45xx/48xx series



AM4013xx series

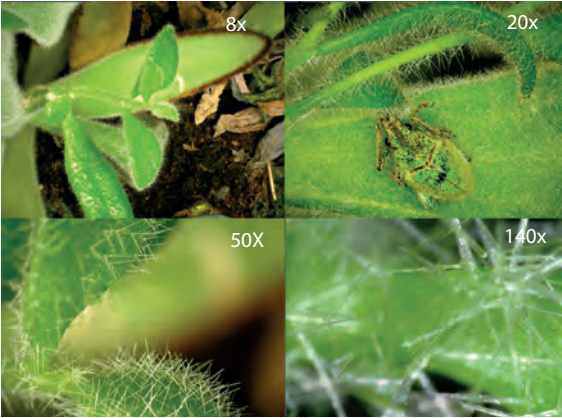
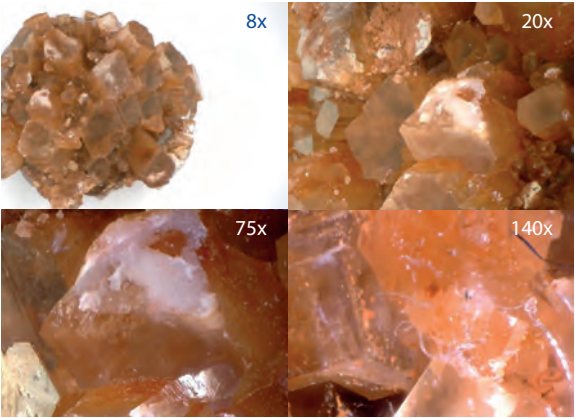


AM7115xx/AM7515xx/AM7915xx series

key features

- ▶ magnifications of 5 to 140 x
- ▶ long working distance of up to 22,5 cm (TF models up to 43 cm)
- ▶ 1.3 megapixel or 5 megapixel
- ▶ with or without a polarization filter
- ▶ metal housing or composite housing
- ▶ edge series with Extended Depth of Field (EDOF), Extended Dynamic Range (EDR), Automatic Magnification Reading (AMR) and Flexible LED Control (FLC)
- ▶ includes the advanced DinoCapture software for Windows and DinoXcope for MacOS

Dino-Lite long working distance



2 2-year European warranty

Regulatory approval: CE, FCC, ROHS

SDK Free SDK available for integration projects

Included software: DinoCapture 2.0 (Windows), DinoXcope (Mac OS)

Wireless streaming in combination with WF-10 unit

MODEL	RESOLUTION	MAGNIFICATION	CONNECTIVITY	LONG WORKING DISTANCE	MEASUREMENT & CALIBRATION	NUMBER OF LEDS	EXCHANGABLE CAPS	POLARIZER	METAL HOUSING	ESD-SAFE	GENERATION	ADDITIONAL FEATURES	PRICE RANGE
LONG WORKING DISTANCE (LWD)													
AM4113TL	1,3 Megapixel	10-90x	USB 2.0	✓	✓	8	-	-	-	-	-	-	€ 300 - 400
AM4013MTL	1,3 Megapixel	10-90x	USB 2.0	✓	✓	8	-	-	✓	✓	-	-	€ 400 - 500
AM4113TL-M40	1,3 Megapixel	5-40x	USB 2.0	✓	✓	8	-	-	-	-	-	macro zoom	€ 300 - 400
AM4113ZTL	1,3 Megapixel	10-90x	USB 2.0	✓	✓	8	-	✓	-	-	-	-	€ 300 - 400
AM4013MZTL	1,3 Megapixel	10-90x	USB 2.0	✓	✓	8	-	✓	✓	✓	-	-	€ 500 - 600
AD4113ZTL	1,3 Megapixel	20-90x	USB 2.0	✓	✓	8	✓	✓	-	-	-	-	€ 400 - 500
AD4013MZTL	1,3 Megapixel	20-90x	USB 2.0	✓	✓	8	✓	✓	✓	✓	-	-	€ 500 - 600
AM4115TL	1,3 Megapixel	10-140x	USB 2.0	✓	✓	8	✓	-	-	-	Edge	-	€ 400 - 500
AM4115ZTL	1,3 Megapixel	10-140x	USB 2.0	✓	✓	8	✓	✓	-	-	Edge	-	€ 500 - 600
AM4515ZTL	1,3 Megapixel	10-140x	USB 2.0	✓	✓	8	✓	✓	-	-	Edge	AMR	€ 500 - 600
AM4815ZTL	1,3 Megapixel	10-140x	USB 2.0	✓	✓	8	✓	✓	-	-	Edge	EDOF/EDR	€ 700 - 800
AM4115TF	1,3 Megapixel	10-70x	USB 2.0	✓	✓	8	✓	-	-	-	Edge	ELWD	€ 500 - 600
AD7013MTL	5 Megapixel	20-90x	USB 2.0	✓	✓	8	✓	-	✓	✓	-	-	€ 600 - 700
AM7115MZTL	5 Megapixel	10-140x	USB 2.0	✓	✓	8	✓	✓	✓	✓	Edge	FLC	€ 700 - 800
AM7515MZTL	5 Megapixel	10-140x	USB 2.0	✓	✓	8	✓	✓	✓	✓	Edge	AMR/FLC	€ 800 - 900
AM7915MZTL	5 Megapixel	10-140x	USB 2.0	✓	✓	8	✓	✓	✓	✓	Edge	AMR/EDOF/EDR/FLC	€ 900 - 1000
AM7115MTF	5 Megapixel	10-70x	USB 2.0	✓	✓	8	✓	-	✓	✓	Edge	ELWD/FLC	€ 700 - 800

recommended product

More information on www.dino-lite.eu/am4815ztl

AM4815ZTL – edge

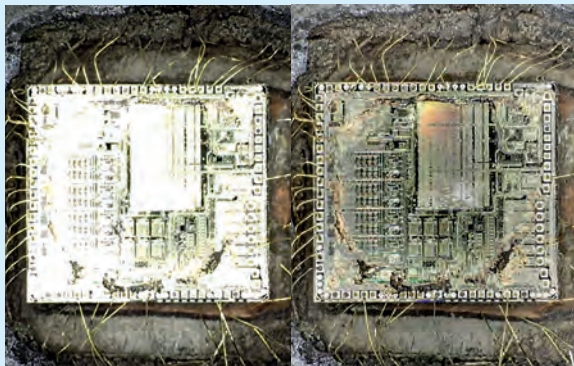
Edge Sensor - Long Working Distance - Polarizer - EDOF - EDR

The AM4815ZTL combines features such as a Polarizer, Long Working Distance, and a magnification range of 10x - 140x, with image processing features such as Extended Depth of Field (EDOF) and Extended Dynamic Range (EDR). With the Extended Dynamic Range (EDR) feature, the details of darker or brighter areas within the object can be revealed by stacking images at different exposure levels. The Extended Depth of Field (EDOF) feature automatically stacks images at different focus level to improve the depth of field on rough or uneven surfaces. Different caps are supplied with the microscope making the Dino-Lite Edge the perfect choice for any professional application.



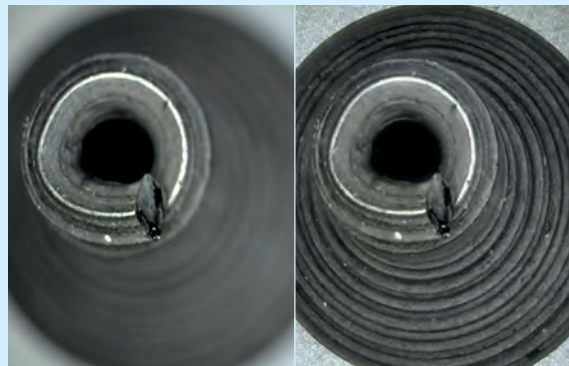
Without EDR

With EDR



Without EDOF

With EDOF



usb 2.0



long working distance
4-15 cm



continuous
~10x - 140x



extended dynamic range
EDR



extended depth of field
EDOF



magnification lock



1,3 megapixels
1280 x 1024



8 white leds
switchable



polarizer
anti-reflection



exchangeable caps